

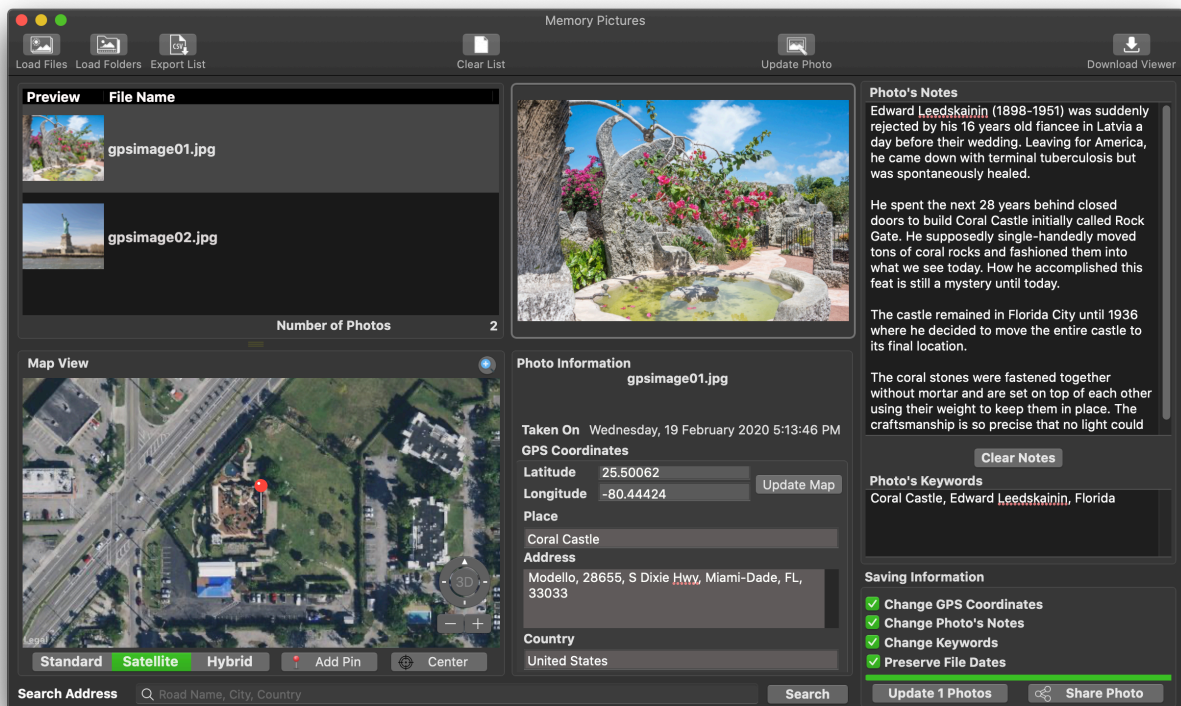


Memory Pictures

Table of Contents

| | |
|--------------------------------|----|
| Introduction | 3 |
| Supported Formats | 4 |
| System Requirement | 4 |
| Version History | 5 |
| Pricing and Licensing | 12 |
| Contact Information | 13 |
| Application Interface Overview | 14 |
| Loading Photos to the List | 15 |
| Menu Bar | 16 |
| File Listing | 18 |
| Map View | 20 |
| Photo Information | 24 |
| Photo's Notes | 25 |
| Photo's Keywords | 25 |
| Saving Information | 26 |

Introduction



The core goal of Memory Pictures is to allow to keep your memories alive. We all take photos with our digital cameras and smartphones and it certainly is a great way to look back at where we came from and where we have been to. However, a picture alone may not paint the whole story.

Utilizing the already available resources built into the JPEG, HEIC and RAW photos is the ability to store vast amount of information. Each time a digital camera takes a photo, all the settings such as shutter speeds, f-stops and so on are stored in the EXIF metadata stored in the photo. Smartphones as well some digital cameras comes with built-in GPS which will add the GPS coordinates of your location to each picture taken. Definitely a great thing to have. However, bad weather and a whole host of issues may render the GPS coordinates to be inaccurate. Also the GPS coordinates is of your position and not the position of your subject.

One of Memory Pictures goal is to allow you to accurately add or modify that GPS Coordinates with ease. This make use of the Apple Maps which is supported in OS X 10.10 and later. With the built-in map support, it makes it easy to find the location and pin it to the photo or photos. Everything is done visually.

The EXIF's Description is also another useful component of the EXIF metadata but it is not really widely used but it can be very beneficial when used. Instead of developing a diary application or penning down your thoughts on a separate location, Memory Pictures now let you store them right inside your photos which you can view from any website or apps which supports it, including Memory Pictures.

Memory Pictures

Our experiences stored in memories would outlive us and it is our legacy we can pass to the future generations.

We hope that you find Memory Pictures useful.

Supported Formats

- **JPEG**
- Adobe RAW **DNG**
- Canon RAW **CR2 & CR3**
- Fujifilm RAW **RAF**
- **HEIC** (High Sierra and above)
- Mamiya RAW **MEF**
- Minolta RAW **MRW**
- Nikon RAW **NEF & NRW**
- Olympus RAW **ORF**
- Panasonic RAW **RW2**
- Pentax RAW **PEF**
- Sony RAW **SR2 & ARW**
- **AVIF****
- **PNG****
- **TIFF*** TIFF & TIF**

* Raw Photo Support is handled by the MacOS RAW Photo System Wide Support and LibRAW.

** PNG typically does not contain EXIF Headers so the description and coordinates are embedded can only be viewed by Memory Pictures and Memory Pictures Viewer.

*** Both Single Page and Multiple Page TIFF are supported although the preview will only show the first page.

System Requirement

- 64 Bit macOS 11 Big Sur and above
- Intel & Apple Silicon Native Support

Version History

| | |
|--------|-----------------------------------------------------------------------------------------------------------------------------------------------------------------------------------------------------------------------------------------------------------------------------------------------------------------------------------------------------------------------------------------------------------------------------------------|
| v1.0.0 | <ul style="list-style-type: none">• Initial Release |
| v1.0.6 | <ul style="list-style-type: none">• Internal Updates |
| v1.1.0 | <ul style="list-style-type: none">• Updated EXIF Engine |
| v1.1.1 | <ul style="list-style-type: none">• Improved Image Preview• Fixed Details not showing up due to the Sandbox restriction |
| v1.1.2 | <ul style="list-style-type: none">• Fixed an issue where the Location and Notes does not change due to the Sandbox restriction |
| v1.2.0 | <ul style="list-style-type: none">• Improved Image Preview• Added option to Share your Photos through Email, Social Media and the likes. The Sharing Option would include both Maps and Photos.• Photos which are smaller than the Preview would be upsize to fit the Preview |
| v1.2.1 | <ul style="list-style-type: none">• Internal Updates |
| v1.2.2 | <ul style="list-style-type: none">• Internal Updates |
| v1.2.3 | <ul style="list-style-type: none">• Faster Image Preview |
| v1.2.4 | <ul style="list-style-type: none">• Update the Load Files Module |
| v1.2.5 | <ul style="list-style-type: none">• Updated Framework• Fixed issue which may cause the Loading of Photos to crash using the Load Files button |
| v1.2.6 | <ul style="list-style-type: none">• Fixed Missing Scrollbar• Improve Speed of Preview• Autorotate Photos based on EXIF Header |
| v1.3.0 | <ul style="list-style-type: none">• Updated UI |
| v1.3.1 | <ul style="list-style-type: none">• Improve Theme Support |
| v1.3.2 | <ul style="list-style-type: none">• Fixed a potential crash when photos are added to the list but subsequently deleted from the finder prior to previewing the photo |
| v1.3.3 | <ul style="list-style-type: none">• Added support to export the list of all the Photos' Coordinates and Notes into a CSV File |
| v1.3.4 | <ul style="list-style-type: none">• Fixed an issue where the GPS Coordinates does not show up correctly when the European Region Setting is used |
| v1.3.5 | <ul style="list-style-type: none">• Faster Loading of the File Listing• Fixed bug which causes the JPEG file with the file extension .JPE not to be loaded in the thumbnail• Fixed a crash when the Select All is selected when there is no files on the list• Fixed a crash when the Share Button is pressed when there is no selected photo• Use a Darker Font for the File Listing |
| v1.3.6 | <ul style="list-style-type: none">• Internal Updates |
| v1.3.7 | <ul style="list-style-type: none">• Improved UI |
| v1.3.8 | <ul style="list-style-type: none">• Internal Updates• Added an Update Photo button on the Toolbar |

Memory Pictures

| | |
|--------|------------------------------------------------------------------------------------------------------------------------------------------------------------------------------------------------------------------------------------------------------------------------------------------------------------------------------------------------------------------------------------------------------------------------------------------------------------------------------------------------------------------------------------------------------------------|
| v1.3.9 | <ul style="list-style-type: none"> • Improved Loading Speed |
| v1.4.0 | <ul style="list-style-type: none"> • Added the option for a Larger Map so that it is easier to pinpoint the location |
| v1.4.1 | <ul style="list-style-type: none"> • Added Option to customize the Place, Address and Country Settings • Fixed Portrait Thumbnails showing up as a partial image • Fixed Load Files bug which causes the App to crash when no picture is selected |
| v1.4.2 | <ul style="list-style-type: none"> • Fixed Bug which causes JPEG files with the file extension .JPE not to be loaded to the list during a drag and drop operation • Now Memory Pictures remember the last used folder within the session • Updated Supporting Scripts |
| v1.4.3 | <ul style="list-style-type: none"> • Added Support for Mojave's Dark Appearance |
| v1.4.5 | <ul style="list-style-type: none"> • Improved Mojave's Dark Appearance • Internal Code Optimization |
| v1.4.6 | <ul style="list-style-type: none"> • Improved Mojave's Dark Appearance Support |
| v1.4.7 | <ul style="list-style-type: none"> • Internal Updates • Fixed issue when searching for a location, the Location Information was not updated • First 14 Days Trial Version released on our website |
| v1.4.8 | <ul style="list-style-type: none"> • Updated Licensing Module |
| v1.4.9 | <ul style="list-style-type: none"> • Internal Updates |
| v1.5.0 | <ul style="list-style-type: none"> • Fixed crash when the photo filenames contains slash / in it • Rewrite Imaging Engine to improve performance for the non-AppStore version as it does not require a roundabout way of writing the files because of the AppStore's Sandbox restriction. |
| v1.5.1 | <ul style="list-style-type: none"> • Fixed a bug where the GPS and Notes are not changed under Mac OS 10.14.4 |
| v1.5.5 | <ul style="list-style-type: none"> • Updated the Internal Framework • Now Supports HEIC Images • Added Magnifier Controls and 3D Camera View to the Map |
| v1.5.6 | <ul style="list-style-type: none"> • Improved the way Photos are Loaded on the List |
| v1.6.0 | <ul style="list-style-type: none"> • Added RAW Photos formats which includes Canon RAW (CR2 & CR3), Fujifilm RAW (RAF), Hasselblad RAW (3FR), Mamiya RAW (MEF), Nikon RAW (NEF), Olympus RAW (ORF), Panasonic RAW (RW2), Pentax RAW (PEF) and Sony RAW (SR2 & ARW) • For the Apple AppStore version, you now be prompted to grant write permission to the folders in which the photos you want to process resides. This is to satisfy the Sandbox requirement • Reworked the File Loading Module to provide performance |
| v1.6.1 | <ul style="list-style-type: none"> • Added RAW Photo Support for Adobe RAW (DNG), Nikon RAW (NRW) and Minolta RAW (MRW) |
| v1.6.2 | <ul style="list-style-type: none"> • Removed Hasselblad RAW (3FR) support as we encountered intermittent issues updating the EXIF Header • Fixed Photo Preview not showing up when the photo's EXIF header does not contain the Orientation Tag |
| v1.6.3 | <ul style="list-style-type: none"> • Fixed "Date Taken On" showing File Creation Date instead of the EXIF Date • Provide a workaround where the Notes are not being Shared |
| v1.6.4 | <ul style="list-style-type: none"> • Fixed Notes showing up as Date Taken On when Shared |
| v1.6.5 | <ul style="list-style-type: none"> • Updated the Internal Framework |

Memory Pictures

| | |
|--------|---------------------------------------------------------------------------------------------------------------------------------------------------------------------------------------------------------------------------------------------------------------------------------------------------------------------------------------------------------------------------------------------------------------|
| v1.6.6 | <ul style="list-style-type: none"> • Now the app no longer extracts the GPS information when loading the photos but employs a JIT retrieval when the photo is selected. • Speed up loading of RAW Photos • Reworked the updating of the EXIF Header Information • Fixed crash when clicking below the last item on the list |
| v1.6.7 | <ul style="list-style-type: none"> • MacOS 10.15 Catalina Support • Updated Internal Framework to fix GPS issues |
| v1.6.8 | <ul style="list-style-type: none"> • Fixed the "Update Photo" button showing the number of photos after the list is cleared • Now the "Update Photo" button is deselected when there is no photos selected • Speed up the process of "Select All" and "DeSelect All" and the GPS Information is taken from the first photo on the list • Updated internal framework |
| v1.6.9 | <ul style="list-style-type: none"> • Fixed Export CSV issue where the GPS information is not included in the data and the address showing that the file is not found • Fixed possible issue with the GPS encoding |
| v1.7.0 | <ul style="list-style-type: none"> • Fixed embedding of longitude in the West showing up as the Eastern Coordinates |
| v1.7.1 | <ul style="list-style-type: none"> • Updated the underlying codes to support the new framework • Fixed Double Quotes messing up the Notes |
| v1.7.2 | <ul style="list-style-type: none"> • Provide a perform boost to the Load Folders module especially for large folders |
| v1.7.3 | <ul style="list-style-type: none"> • Fixed an issue where the wrong coordinates is saved when the locale is set to a country which uses comma as decimal notation. |
| v1.7.4 | <ul style="list-style-type: none"> • Fixed an issue where the Address or Notes are not updated when there is a single quote ' in one of the entries. |
| v1.7.5 | <ul style="list-style-type: none"> • Fixed issue where the "Description" EXIF Header is not populated with the Notes. |
| v1.7.6 | <ul style="list-style-type: none"> • Code Optimization • Add check for the EXIF Description tag and failing which would switch to the User Comment |
| v1.7.7 | <ul style="list-style-type: none"> • Convert Smart Quotes to Standard Quotes for Compatibility with our platforms |
| v1.7.8 | <ul style="list-style-type: none"> • Update Underlying Framework • Added Keywords Tag Support • Reworked the fallback to the User Comments if Description Tag is not present • Improved Conversion of Smart Quotes to Standard Quotes |
| v1.7.9 | <ul style="list-style-type: none"> • Updated Underlying Framework |
| v1.8.0 | <ul style="list-style-type: none"> • Improved the Thumbnail Image Quality |
| v1.8.1 | <ul style="list-style-type: none"> • Fixed Mac AppStore Version showing up as Trial |
| v1.8.2 | <ul style="list-style-type: none"> • Improved Support for HEIC Photos |
| v1.8.3 | <ul style="list-style-type: none"> • Updated Underlying Framework |
| v1.8.4 | <ul style="list-style-type: none"> • Overhauled the Underlying Framework |
| v1.8.5 | <ul style="list-style-type: none"> • Reworked the Load Files Module |
| v1.8.6 | <ul style="list-style-type: none"> • Updated the Underlying Framework |

Memory Pictures

| | |
|--------|----------------------------------------------------------------------------------------------------------------------------------------------------------------------------------------------------|
| v1.8.7 | <ul style="list-style-type: none"> • Updated the Underlying Framework |
| v1.8.8 | <ul style="list-style-type: none"> • Updated the Underlying Framework |
| v1.8.9 | <ul style="list-style-type: none"> • Reworked Module to work with RAW Photos from cameras which is not supported by the MacOS RAW System Wide Support |
| v1.9.0 | <ul style="list-style-type: none"> • Updated the Underlying Framework • UI Updates |
| v1.9.1 | <ul style="list-style-type: none"> • Updated the Underlying Framework • UI Updates |
| v1.9.2 | <ul style="list-style-type: none"> • Big Sur Support • Updated the Underlying Framework |
| v1.9.3 | <ul style="list-style-type: none"> • Apple Silicon Native Support • Updated the Underlying Framework |
| v1.9.4 | <ul style="list-style-type: none"> • Date Time is now editable • Fixed Pictures Details not showing up correctly under Big Sur |
| v1.9.5 | <ul style="list-style-type: none"> • Updated the Underlying Framework |
| v1.9.6 | <ul style="list-style-type: none"> • Fixed Crash when launching under MacOS 10.13 High Sierra |
| v1.9.7 | <ul style="list-style-type: none"> • Improved Support for MacOS 10.12 Sierra • Fixed Crash when navigating the map in the main window when the Big Map View is not shown |
| v1.9.8 | <ul style="list-style-type: none"> • Reworked the Big Map View module |
| v1.9.9 | <ul style="list-style-type: none"> • Added PNG Support |
| v2.0.0 | <ul style="list-style-type: none"> • Speed Up the extraction of the EXIF data • Updated the Underlying Framework |
| v2.0.1 | <ul style="list-style-type: none"> • Updated UI • Internal Code Optimisation |
| v2.0.2 | <ul style="list-style-type: none"> • Improved ARM Support • Updated the Underlying Framework |
| v2.0.3 | <ul style="list-style-type: none"> • Updated the Underlying Framework |
| v2.0.4 | <ul style="list-style-type: none"> • Fixed an issue under Catalina where nothing can be typed in the Search Address Box |
| v2.0.5 | <ul style="list-style-type: none"> • Updated the Underlying Framework • Minor UI Update |
| v2.0.6 | <ul style="list-style-type: none"> • Updated the Underlying Framework |
| v2.0.7 | <ul style="list-style-type: none"> • Updated the Underlying Framework |
| v2.0.8 | <ul style="list-style-type: none"> • Internal Code Optimisation |
| v2.0.9 | <ul style="list-style-type: none"> • Updated the Underlying Framework |
| v2.1.0 | <ul style="list-style-type: none"> • Updated the Underlying Framework • Minor UI Updates |
| v2.1.1 | <ul style="list-style-type: none"> • Fixed Location Search disappearing in Full Screen View • Added Support to Update File Creation and Modification Date to the EXIF Date |

Memory Pictures

| | |
|--------|-----------------------------------------------------------------------------------------------------------------------------------------------------------------------------------------------------------------------------------------------------------------------------|
| v2.1.2 | <ul style="list-style-type: none"> • Improved Search Address Function • When Searching for Address, the entered text would now be use to populate the Address box • Address now shows City instead of County. • Fixed Typo in App |
| v2.1.3 | <ul style="list-style-type: none"> • Reworked the Reverse Coordination Lookup module when loading CSV Files |
| v2.1.4 | <ul style="list-style-type: none"> • Updated the Underlying Framework |
| v2.1.5 | <ul style="list-style-type: none"> • Updated the Underlying Framework • Minor UI Update |
| v2.1.6 | <ul style="list-style-type: none"> • Updated the Underlying Framework |
| v2.1.7 | <ul style="list-style-type: none"> • Added TIFF Support |
| v2.1.8 | <ul style="list-style-type: none"> • Updated the Underlying Framework |
| v2.1.9 | <ul style="list-style-type: none"> • Updated the Underlying Framework • Internal Code Optimization |
| v2.2.0 | <ul style="list-style-type: none"> • Replaced the Date and Time Entry Edit Box • Fixed Crash when no existing date found in the EXIF Header by reverting to the File Creation Date |
| v2.2.1 | <ul style="list-style-type: none"> • Updated the Underlying Framework • Internal Code Optimization |
| v2.2.2 | <ul style="list-style-type: none"> • Fixed Crash when launching under MacOS 10.13 High Sierra |
| v2.2.3 | <ul style="list-style-type: none"> • Updated the Underlying Framework |
| v2.2.4 | <ul style="list-style-type: none"> • Updated the Underlying Framework |
| v2.2.5 | <ul style="list-style-type: none"> • Updated the Underlying Framework |
| v2.2.6 | <ul style="list-style-type: none"> • Updated the Underlying Framework |
| v2.2.7 | <ul style="list-style-type: none"> • Updated EXIF Engine |
| v2.2.8 | <ul style="list-style-type: none"> • Reworked Internal Codes |
| v2.2.9 | <ul style="list-style-type: none"> • Updated Underlying Framework |
| v2.3.0 | <ul style="list-style-type: none"> • Updated Underlying Framework |
| v4.3.1 | <ul style="list-style-type: none"> • Added GPS Coordinates in the File Listing |
| v4.3.2 | <ul style="list-style-type: none"> • Updated Underlying Framework • Minor UI Fixes |
| v4.3.3 | <ul style="list-style-type: none"> • Updated Underlying Framework |
| v4.3.4 | <ul style="list-style-type: none"> • Minor UI Fixes • Updated Underlying Framework |
| v4.3.5 | <ul style="list-style-type: none"> • Fixed hang when the Search Address could not locate the address |
| V4.3.6 | <ul style="list-style-type: none"> • Updated Underlying Framework |
| v4.3.7 | <ul style="list-style-type: none"> • Updated Underlying Framework • Set the Hybrid Map to be the default map view |

Memory Pictures

| | |
|--------|---------------------------------------------------------------------------------------------------------------|
| v4.3.8 | • Internal Code Optimization |
| v4.3.9 | • Internal Code Optimization • Updated Underlying Framework |
| v4.4.0 | • Fixed crash when loading malformed images to the list • Updated Underlying Framework • Minor UI Fixes |
| v4.4.1 | • Updated Underlying Framework |
| v4.4.2 | • Updated Underlying Framework • Minor UI Fixes |
| v4.4.3 | • Lower minimum support to macOS 10.14 Mojave |
| v4.4.4 | • Updated Underlying Framework • Minor UI Fixes |
| v4.4.5 | • Fixed a crash with macOS 12 Monterey |
| v4.4.6 | • Updated Underlying Framework • Minor UI Fixes |
| v4.4.7 | • Updated Underlying Framework • Minor UI Fixes • Added AVIF Image Support |
| v4.4.8 | • Updated Underlying Framework • Minor UI Fixes |
| v4.4.9 | • Updated Underlying Framework • Minor UI Fixes |
| v4.5.0 | • Updated Underlying Framework • Minor UI Fixes |
| v4.5.1 | • Updated Underlying Framework |
| v4.6.2 | • Updated Underlying Framework |
| v4.6.3 | • Added Support for JPEG XL Images |
| v4.6.4 | • Updated Underlying Framework |
| v4.5.5 | • Updated Underlying Framework |
| v4.5.6 | • Updated Underlying Framework |
| v4.5.7 | • Updated Underlying Framework |
| v4.5.8 | • Updated Underlying Framework |
| v4.5.9 | • Updated Underlying Framework |
| v4.6.0 | • Updated Underlying Framework |
| v4.6.1 | • Updated Underlying Framework • Minor UI Fixes |
| v4.6.2 | • Updated Underlying Framework |
| v4.6.3 | • Updated Underlying Framework |
| v4.6.4 | • Updated Underlying Framework |

Memory Pictures

| | |
|--------|---------------------------------------------------------------------------------------------------------------------------------------------------------------|
| v4.6.5 | <ul style="list-style-type: none">• Updated Underlying Framework |
| v4.6.6 | <ul style="list-style-type: none">• Updated Underlying Framework• Minor UI Fixes |
| v4.6.7 | <ul style="list-style-type: none">• Updated Underlying Framework• Minor UI Fixes |
| v4.6.8 | <ul style="list-style-type: none">• Updated Underlying Framework• Minor UI Fixes |
| v4.6.9 | <ul style="list-style-type: none">• Updated Underlying Framework• Minor UI Fixes |
| v4.7.0 | <ul style="list-style-type: none">• Updated Underlying Framework• Redesigned the UI to Maximize the Map and Picture View |
| v4.7.1 | <ul style="list-style-type: none">• Updated Underlying Framework• Minor UI Fixes• Minimum Requirement set to macOS 11 Big Sur |
| v4.7.2 | <ul style="list-style-type: none">• Updated Underlying Framework• Minor UI Fixes |

Pricing and Licensing

Memory Pictures currently is available for sale on our website through our fulfillment agent, 2Checkout and also on the Mac AppStore.

On our website, we offer a 14 Days free trial version which you can test before purchasing our app while on the Mac AppStore, it is only available as a no trial version.

Mac AppStore US\$5.99

<https://itunes.apple.com/us/app/memory-pictures/id1149209988?ls=1&mt=12>

CREEM.IO US\$5.50

https://www.creem.io/payment/prod_5SgAB0Zahdq4O5bpQ9yCS2

If you purchase via CREEM.IO, we will email you the license file within 24 hours separately from the 2Checkout receipt. Once you have that file, bring up the Registration window from within the app.

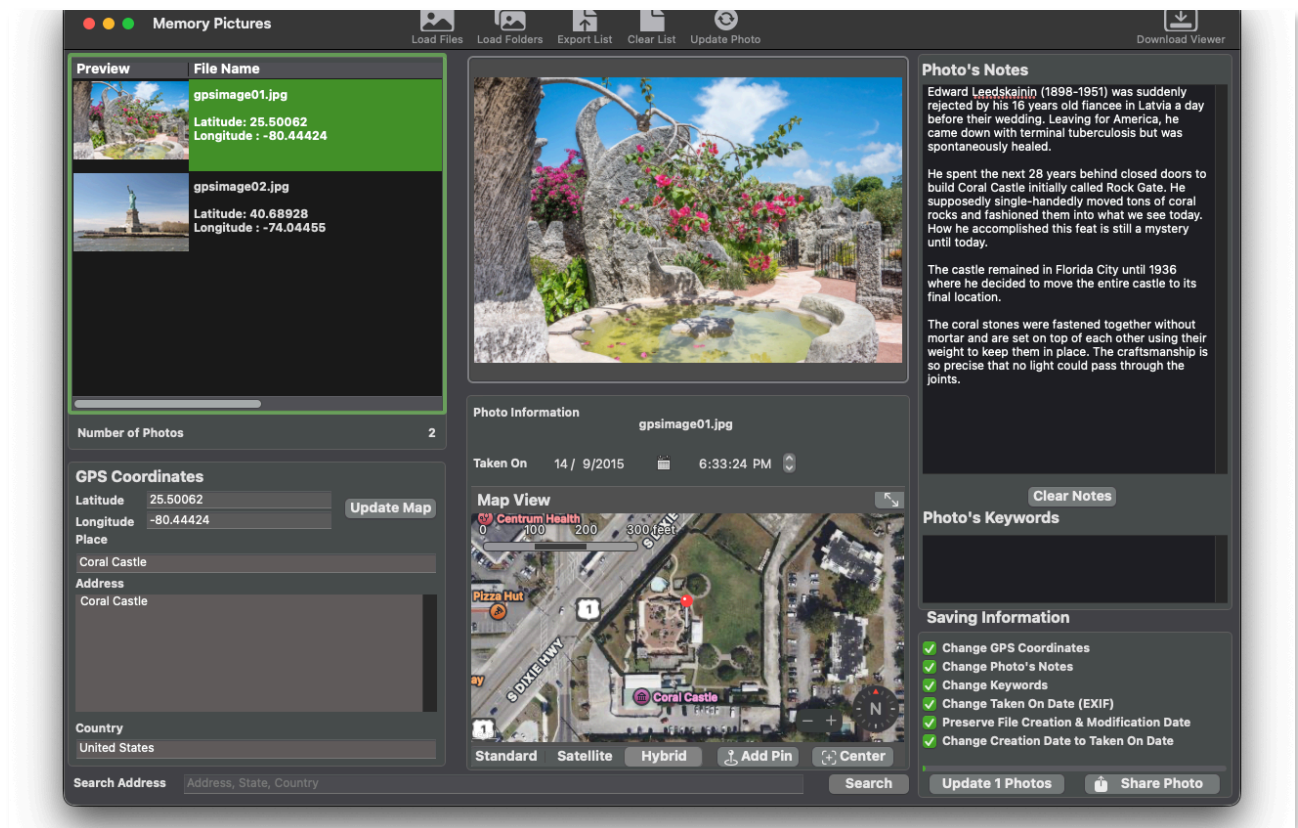
Use the Select License File to import that downloaded license file to license the application.

Contact Information

We stand by our applications and if you have any queries or require any assistance, do contact us via email at support@completemagic.com. We will address your issue within 24 hours and get back to you.

Do provide as much information as possible so that we can find that solution.

Application Interface Overview



On the top, we have the **Menu Bar** which contains Load Files, Load Folders, Export List, Clear List, Update Photos, Download Viewer and Register (not available on the Mac AppStore Version). This primarily allows you to import and manage the file listing below it.

The **File Listing** includes a Preview of the Photo and its filename. This let you select one or more photos to add/modify the GPS Coordinates and the Notes. When you click on a photo, a larger preview will appear with the EXIF Date and Time, GPS Coordinates and Notes are shown as and where available.

The **Map View** is where you would see the Red Pin on where the existing coordinates are (if available). This view will allow you to search a new location, make changes to existing one or add a new one to the picture.

The **Photo Information** shows the Date and Time of when the photo was taken, the GPS Coordinates and where available will do a search to reveal the place name, address and country. This make use of Apple Maps' extensive location library.

On the right-most column is the area where the **Photo's Notes** will be shown, added or amended.

Memory Pictures

Below that is the **Saving Information**, where you can set to have the application change either GPS Coordinates or the Photo's Notes or both on the selected Photos. Save Photos let you share the photo and text via the Mac's Sharekit framework.

Loading Photos to the List

Before being able to process any photos, you will first and foremost add them to the List. There are 3 ways to accomplish that.

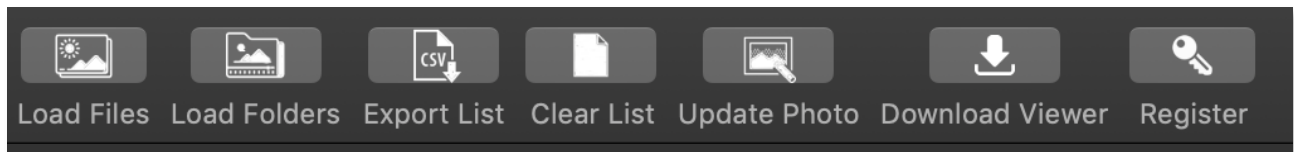
- | | |
|----------------------|-----------------------------------------------------------------------------------------------------------------------------------------------------------------------------------------------------------------------------------------------------------------------------------------------------------------------------------------------------------------------------------------------------------------------------------------------------------------------------------------------------------------------------|
| Load Files | Using this option, you can pick one or many files from a single folder. |
| Load Folders | <p>The Load Folders option, let you pick a folder and the app will automatically search all the JPEG, JPEG XL**, HEIC, PNG, Canon RAW (CR2 & CR3), Fujifilm RAW (RAF), Hasselblad RAW (3FR), Mamiya RAW (MEF), Nikon RAW (NEF), Olympus RAW (ORF), Panasonic RAW (RW2), Pentax RAW (PEF) and Sony RAW (SR2 & ARW) in that folder and add them to the list. You will be prompted if you want to also include all sub-folders of photos to the list.</p> <p>JPEL XL** is supported from macOS 14 Sonoma and above</p> |
| Drag and Drop | This method let you drag and drop files from Finder into the app |

Which method to be used will depends on the circumstances.

A point to note is that when the photos are added to the list, it may appear to hang especially when the list is long. What it is doing is to evaluate each and every photo, generate the thumbnail and extract the GPS and Photo Notes. For a list of about 400 photos, it might take about 10 to 20 seconds to load up depending on the speed of your Mac.

It's probably best to work with a manageable list if all the photos on that list need to have different GPS Locations as you will work with one or more photos at a time.

Menu Bar



In the prior section, we discussed about Load Files and Load Folders so we will move on to the other button.

Export List

The export list would generate a CSV based file which contains all the details from the photos on the list in a text readable CSV file which can be imported to Numbers or even a text viewer.

This list will contain the Filename, EXIF Date, Latitude and Longitude, Place, Address, Country and Notes.

Clear List

This clears the list so you can start fresh with a new set of photos.

Update Photo

This replicates the Update Photos button at the bottom which effectively update the selected photo or photos with the new coordinates and notes.

For the App Store version, you will need to grant Write Permissions for the App to update the information for the Photos and Videos. If you denied it permission, those photos would not be updated.

Download Viewer

You will be navigated to the website to download a free copy of the Memory Pictures Viewer which you can distribute.

If you download the copy of Memory Pictures from our website, it will bring you to our website to download a copy. In compliance with the Mac AppStore, the Mac AppStore version would point to the copy on the Mac AppStore.

You can download the Mac Version of the free viewer from our website at <https://www.completemagic.com/apps/memory-pictures-viewer/>

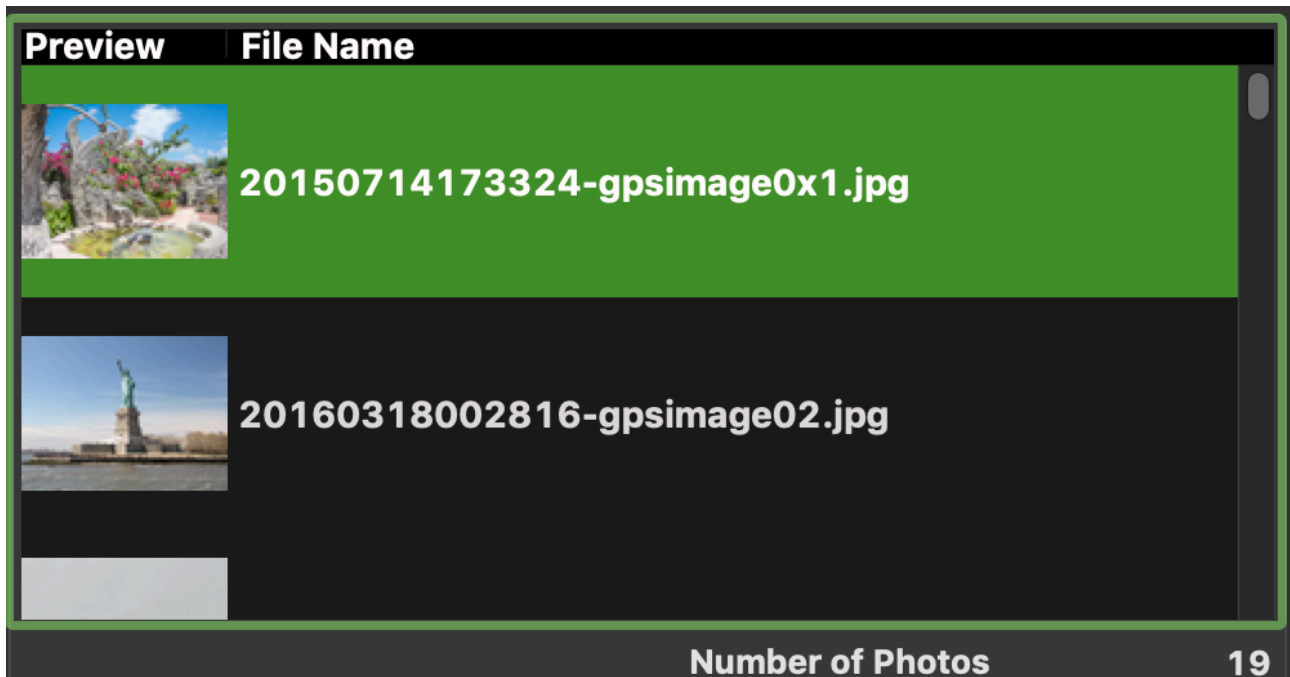
The free Windows version can be downloaded from our website at <https://www.batchimage.com/product/memory-pics-viewer-windows/>

Memory Pictures

Register

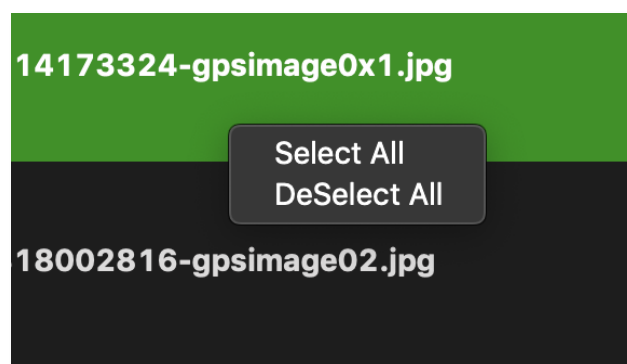
This is only found on the copy downloaded from our website as it lets you purchase a license, register it and also convert the Mac AppStore version to our web version.

File Listing



The File Listing is an essential part of the application. When you click on the photo, it will automatically bring up all the GPS Coordinates and notes and show the point on the map as and where available. If that photo does not contain the GPS Coordinates, it will ask you if you want to use the prior GPS Coordinates for the currently selected photo. By accepting the settings will save you time if the photo is at the same location.

Alternatively, if there is a group of photos which are of the same subject and thus at the same GPS Coordinates, you can select a multiple number of photos and have the same coordinates applied to them.



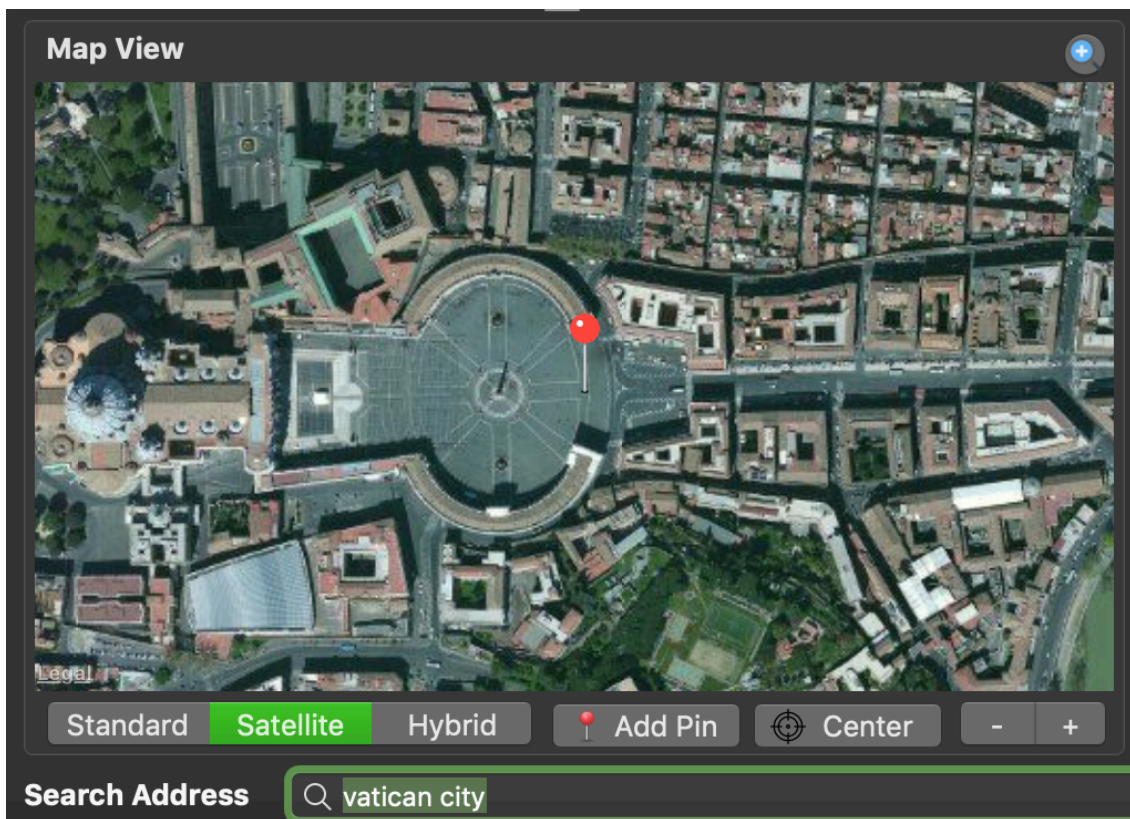
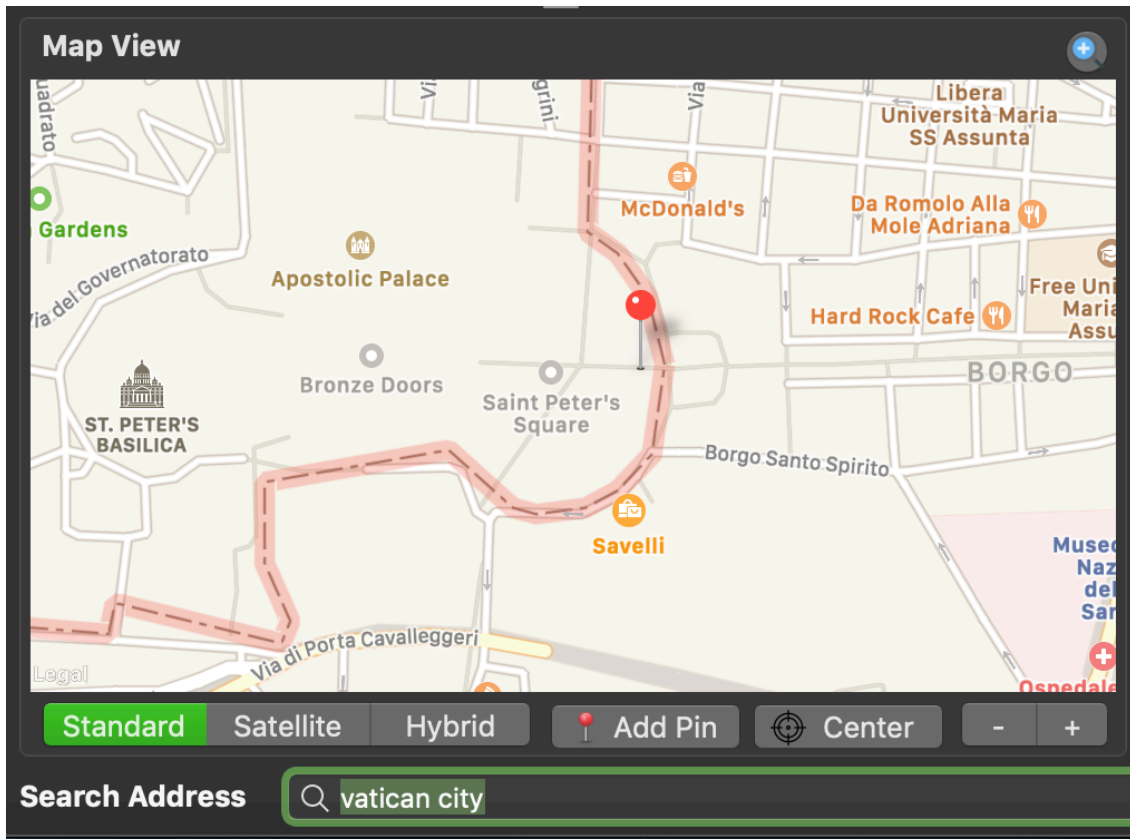
You can also bring up the contextual menu (two finger click on the touchpad or right mouse click on a two button mouse) and select "Select All". This will select all the photos on the list and show the details of the first photo.

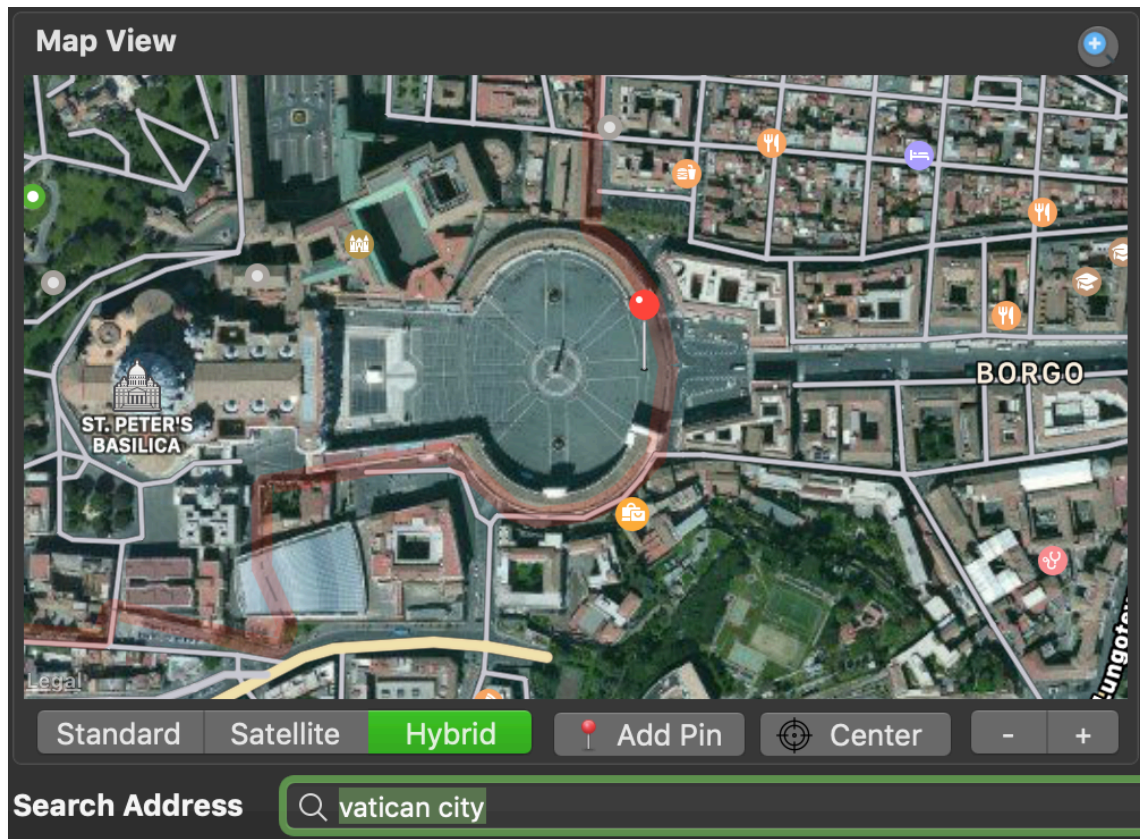
For the start, work with one photo at a time so that you get used to the interface.

Sorting the List Alphabetically

You can sort the list alphabetically either by ascending or descending order by clicking on the "Filename" header. This will toggle the directions. It uses a simple sort algorithm.

Map View





Toggling View

Memory Pictures uses the same Maps App which comes with OS X 10.9 and above. You can use either one of the three views, Standard, Satellite and Hybrid to visualize the location. The above shows the Standard and Hybrid view. Toggling them will automatically switch between the views. As the maps are not stored on your computer, you will have to have your internet access on for your Mac to view it. Otherwise no maps will be rendered.

Add Pin

The Pin defines the GPS Coordinates of the subject. By using the Add Pin button, a Red Pin is added to the center of the visible map. This is the starting point. The Pin position is not fixed and you can move it around to the correct location. Just click on the red pin head and move it into the correct location. As soon as you drop the pin, the new GPS Coordinates are computed.

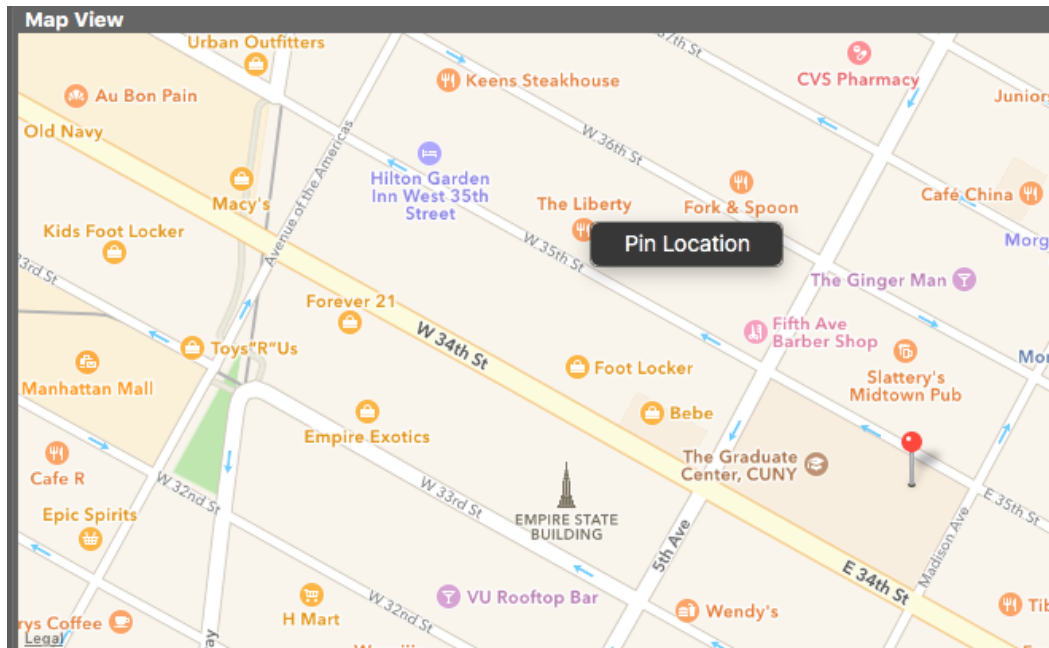
Center

Memory Pictures let you zoom around the map and Center will bring the pinned location back to the center of the map. So you can pin the Empire State Building and zoom your map into the Great Wall of China, clicking the Center will bring you back to the Empire State Building.

- +

This will let you zoom in and out of the map. You can alternatively use your fingers on the touch pad to zoom in and out

Adding a Pin Visually



The other method of adding a Pin is to find the spot on the map, bring up the contextual menu within the map and select **Pin Location** and a pin will be placed at that spot.

There can only be a single pin on the map and only the latest pin will be used with the prior ones removed. Well, basically you can be at two places in one photo.

Search Address

The Search Address will let you pin the map using an address. This will search Apple Maps' extensive library of location to find the relevant GPS Coordinates. Once a location is searched, a pin will be added to that location.

If you happened to search and it pins the wrong location, you can refine the search by adding the country and or the state of the place. Some times there are more than one place with the same road name around the world.

The search may not always be accurate so be prepared to move the pin into the right location.

If you do not see the map moving to the correct location or moving at all and the progress wheel continually spinning, it is possible that it is unable to locate the right place. Do refine the address with a country and or state to get a more accurate search result. The precedence would be your current locale. If you are searching outside your state or country, it is best to include those in too.

Larger Map View



You can expand the map view by maximizing the application and if that is not enough, click on the top right magnifying glass in the Map View to see a larger map view.

Memory Pictures

In the larger map view, dragging the pin around would also change the pin and location of the in-app Map View.

Photo Information

Photo Information
gpsimage01.jpg

Taken On 29/01/ 2021, 6:36:45 PM

GPS Coordinates

Latitude 25.500620

Longitude -80.444240

Update Map

Place
Coral Castle

Address
Modello, 28655, S Dixie Hwy, Miami-Dade, FL, 33033

Country
United States

When you search a location, move the pin or view a photo, the Photo Information would be updated with the address details.

However at times, it may not be accurate especially if you are referencing a unit inside a building or somewhere that Apple Maps does not have any information yet such as a secret hiding place. You can update the information here.

If you rather use the GPS Coordinates to fine-tune instead of the searching for the place via the map or dragging the pin around, you can type in the Latitude and Longitude and click Update Map to bring it to the new location.

The Taken On Date, Place, Address and Country fields are editable too.

Once you made the changes which may include the Photo's notes, click on the Update Photo to embed the new information to the Photo.

Photo's Notes

The Photo's Notes is where you can enter the description of the photo or any notes you want to include in the photo about that moment. The choice is yours. The photo doesn't permit changing fonts

Photo's Notes

Edward Leedskainin (1898-1951) was suddenly rejected by his 16 years old fiancée in Latvia a day before their wedding. Leaving for America, he came down with terminal tuberculosis but was spontaneously healed.

He spent the next 28 years behind closed doors to build Castle Castle initially called ? Rock Gate?. He supposedly single-handedly moved tons of coral rocks and fashion it to what we see today. How he accomplished this feat is still a mystery until this day.

The castle remained in Florida City until 1936 where he decided to move the entire castle to its final location.

The coral stones are fastened together without mortar and are set on top of each other using their weight to keep them together. The craftsmanship is so precise that no light passes through the joints.

Clear Notes

The Clear Notes button just clear the notes windows so you have a clean slate to work with. It doesn't at this time remove it from the photo.

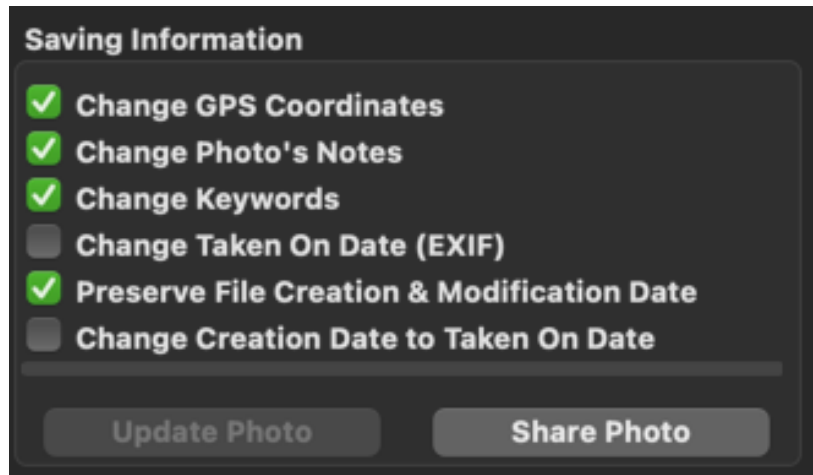
Photo's Keywords

Photo's Keywords

Florida, Coral, Castle

You can use the Photo's Keywords field to enter relevant keywords related to the photo(s).

Saving Information



To update the photo or photos with the updated GPS Coordinates, Notes and Keywords, you will need to click on the Update Photo button. This will effectively make the necessary changes or additions to them. The button will identify how many photos it will update based on what is being selected.

Instead of updating both the GPS, Notes and Keywords of all the photos, you can determine which one to update by checking and unchecking the relevant boxes.

This is particularly crucial if you are updating more than one photo at a time. If they all have different GPS Coordinates already in the photos and you want to just add the same notes to them all, uncheck the Change GPS Coordinates. Alternatively, if all you want is to change all to the same GPS Coordinates but keep the same Photo's Notes then uncheck the Change Photo's Notes before clicking on the Update Photo button.

To preserve the File Creation & Modification Dates, check the Preserve File Creation & Modification Dates and the EXIF Date (if any), File Creation and File Modification Date for the photo being modified will be retained. This is done so that it does not mess up the file sorting order.

If the Change Taken On Date (EXIF) is checked, the Taken On Date listed in the Photo Information would be used as the new EXIF Date and Time.

When exporting photos from the Photo Apps, moving or duplicating them, the macOS system would change the file dates to the current date/time. If you want to retain the original photo dates, check the Change Creation Date to Taken On Date which will use the embedded EXIF Date time.

If both the Preserved File Creation & Modification Date and Change Creation Date to Taken On Date are checked, the former would take precedence.

Memory Pictures

Share Photo

Share Photo would show the Photo with the Notes via Apple's ShareKit. The list of the apps which it can share to depends on those enabled in your preferences. To add more apps which you can share with, go to System Preferences >> Extensions >> Share Menu.

For some reason, the share kit does not permit sharing both Photos and Notes at the same time. As a workaround, we saved the notes to the Clipboard and you can paste that it using the Command ⌘ + C to copy it in.

Notes

Memory Pictures will not work with photos within the Apple's Photos App database or NTFS formatted drives. You will need to export the photos to a Mac supported file format and perform the necessary changes to the file.

Memory Pictures

We hope that you enjoy using this application and that you will find it useful.